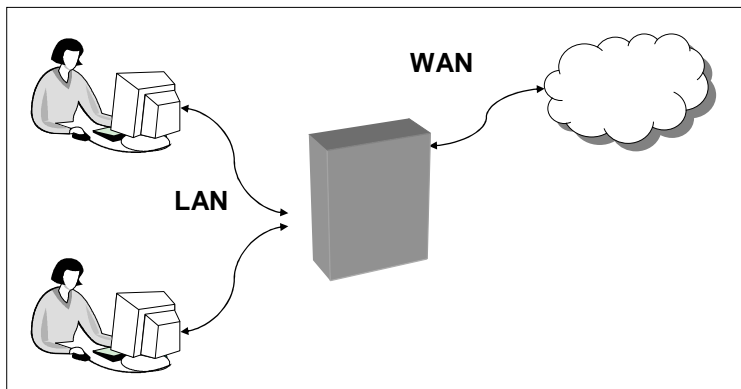
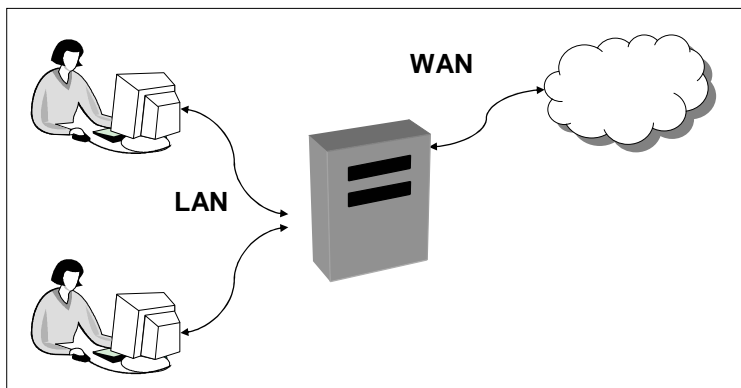


Randy Wang



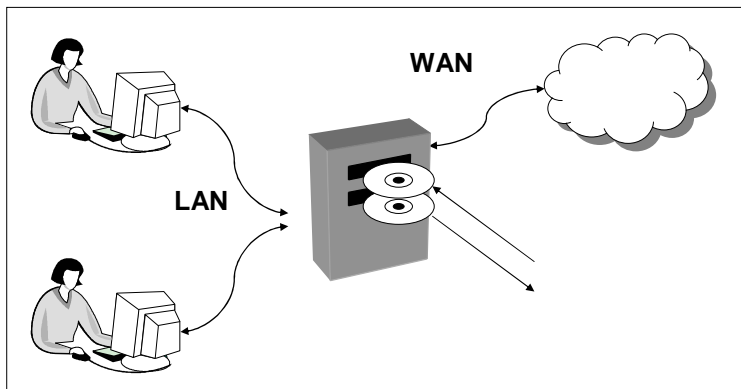
- A conventional home DSL router

A Postmanet Router



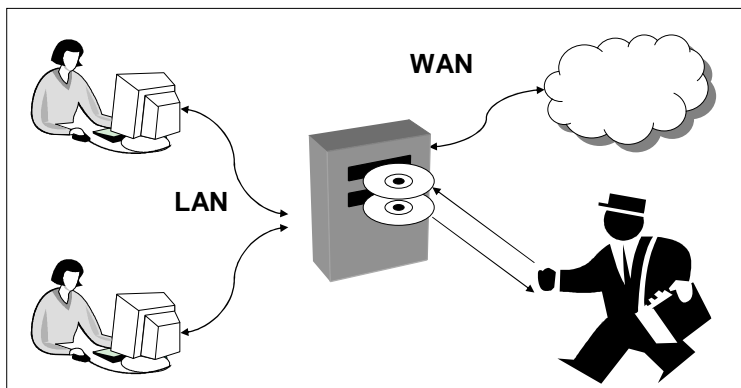
- Open a few slits in the box

A Postmanet Router



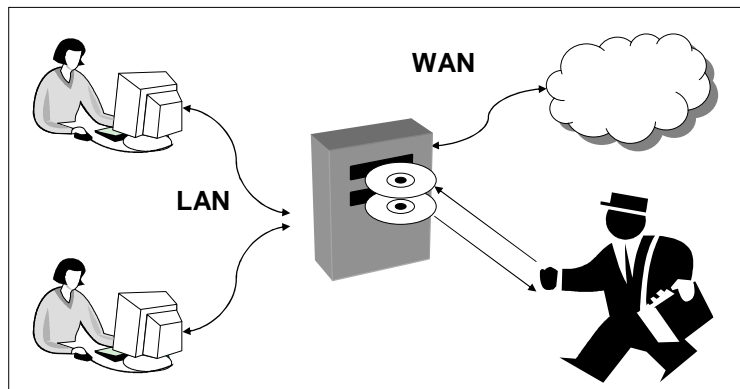
- Spits out an outgoing DVD: contains data sent
- Takes in incoming DVD: contains data received

A Postmanet Router



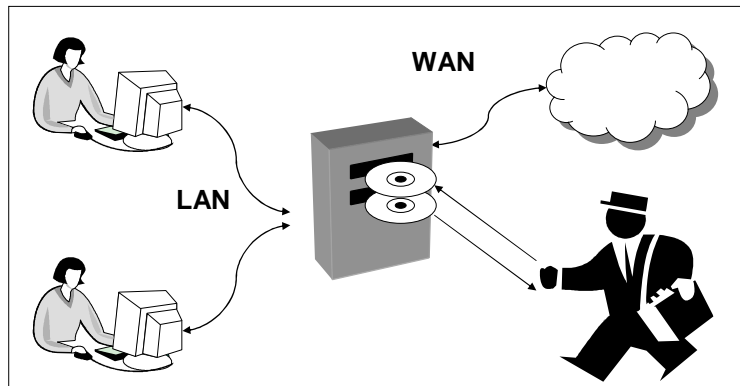
- DVDs replaced by daily postman visit
- Transparent to users, and generic (>> netflix)
- Can have a simultaneous Internet connection

The Postmanet



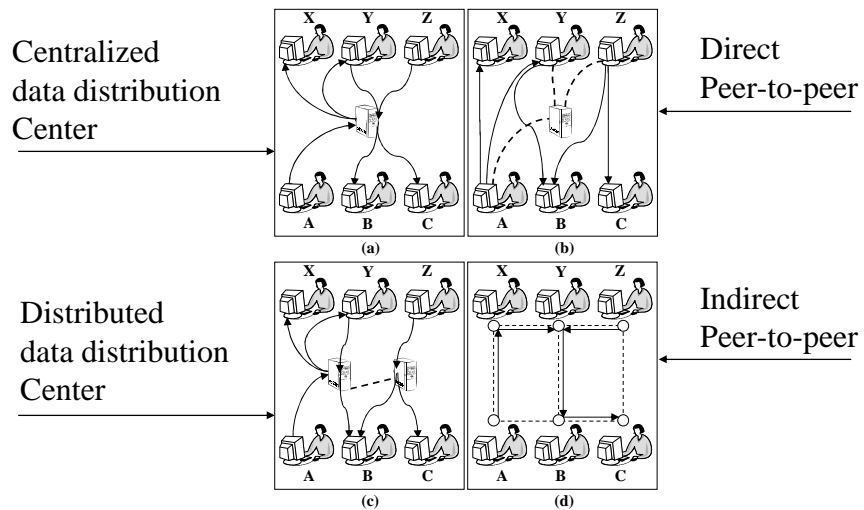
- Technology trend: disk density growth vs. digging ditches
- Huge bandwidth potential
- Work: system-level, applications

System Level Example Problems

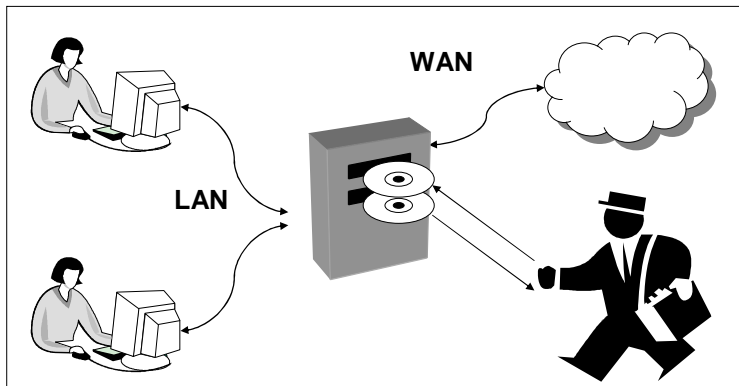


- How to integrate WAN and Postman
- How to route data

Postmanet Routing Options



Example Applications



- Bandwidth-intensive: Kazaa
- Disadvantaged areas: distance learning

Other Areas

- PlanetLab projects: a web crawler, a file system
- Memex projects: a distributed VCR
- Wireless projects: marry BlackBerry-style mobility with a distributed VCR
- Robot projects: a killer webcam
- Distance-learning for children

Mona Singh

- Computational molecular biology
- Its interface with machine learning and algorithms
- In particular: computational methods for predicting aspects of protein structure, function, and interactions.